

Static and seismic analysis and monitoring of Scrovegni's Chapel, Padova (Italy), 1995-2014

Overall study and survey of behaviour and state condition to preserve the Giotto's frescoes

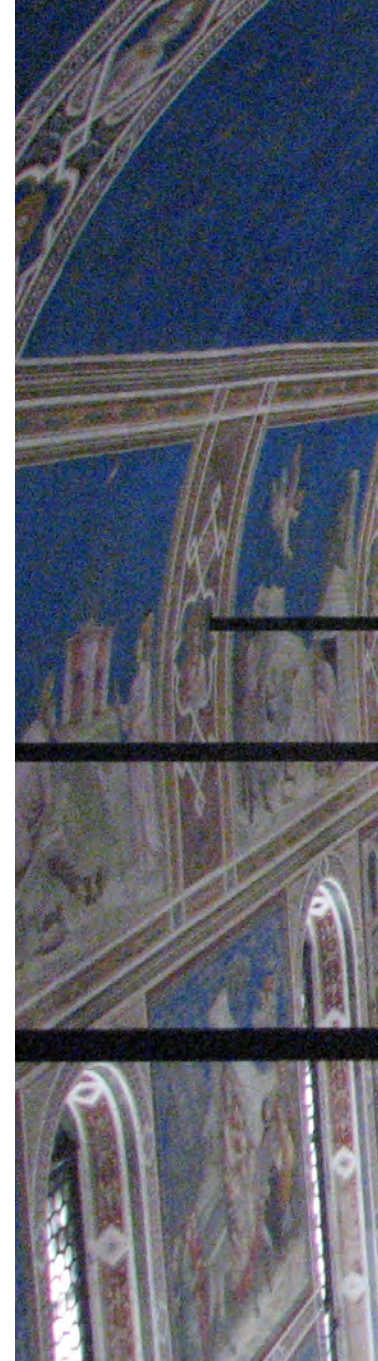
Total restoration costs: € 750'000

The Scrovegni's Chapel was constructed in 1300, it is a masonry building which host the cycle of Giotto's frescoes. These paintings illustrate stories of the Virgin Mary and Christ. The construction was at the beginning the internal chapel of the great palace of the Scrovegni family. The current state is the result of several transformations where the meaningful are: the porch collapse (1817), the palace demolition ('800) and the restoration interventions carried out until the 1963 when the original ties and the roof were substituted by new ones.

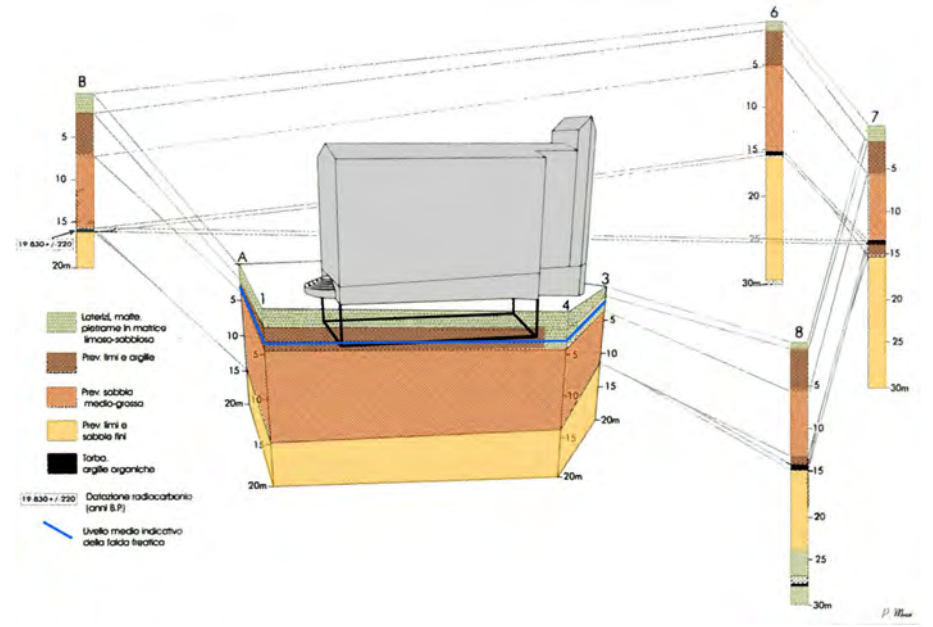
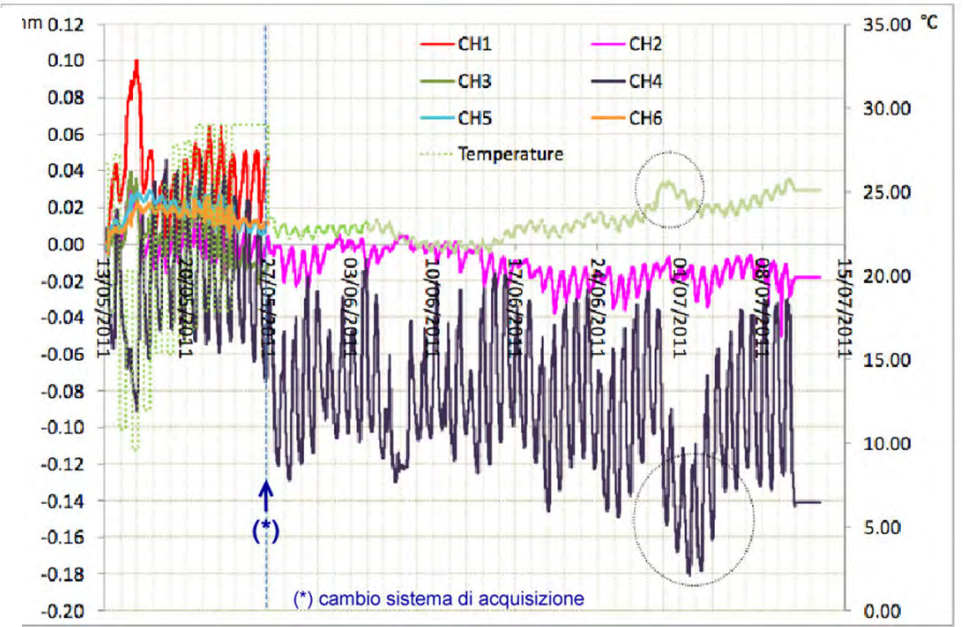
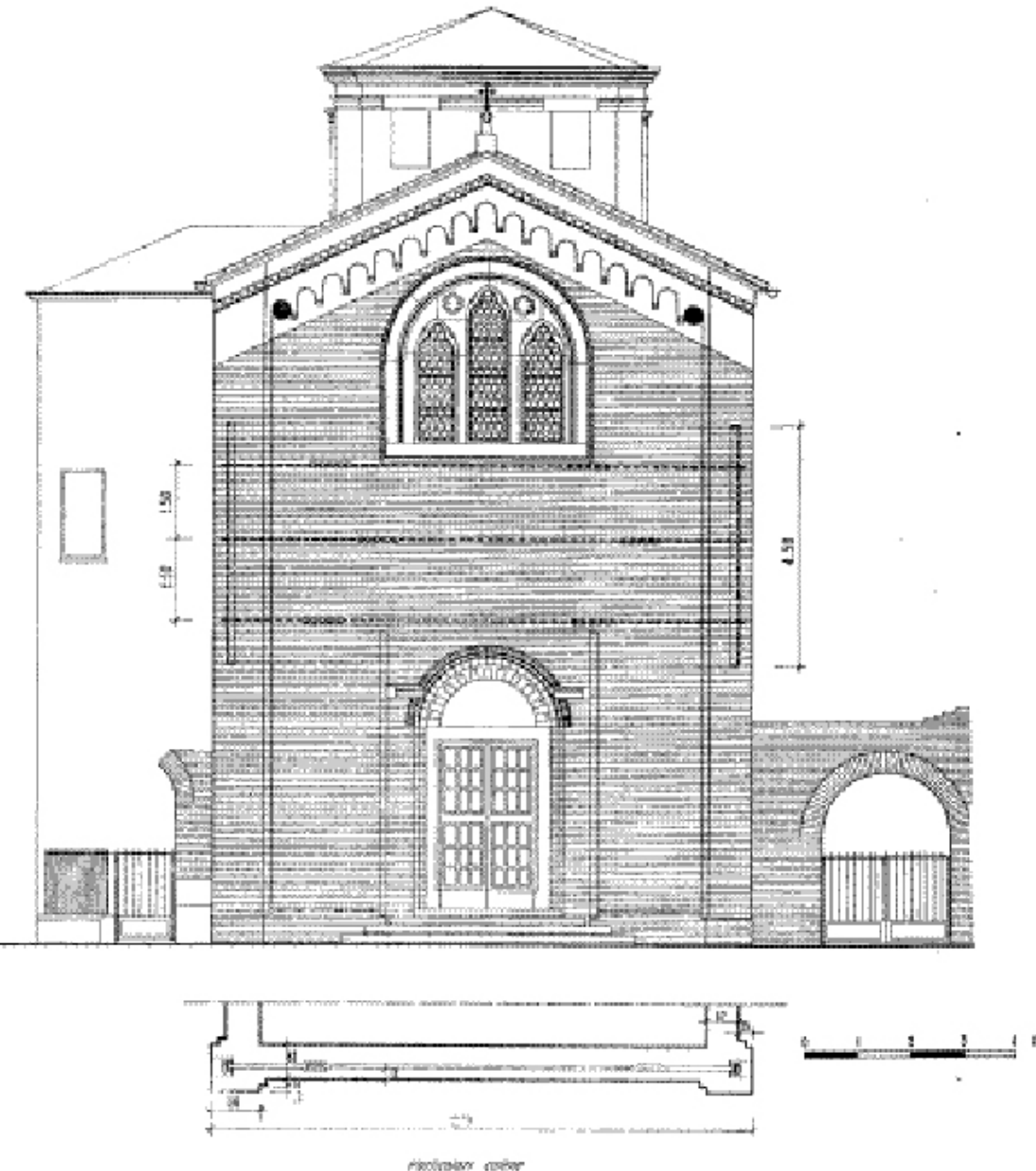
A systematic testing and survey of the plaster consistency and of the structural behaviour started since the 1995 and it is still in progress. It is an activity parts within an overall project of conservation held together by the municipality and the Ministry of Heritage and Cultural Activity (MiBAC) with the aim to guarantee the best conservation state as possible after the restoration of 2002.

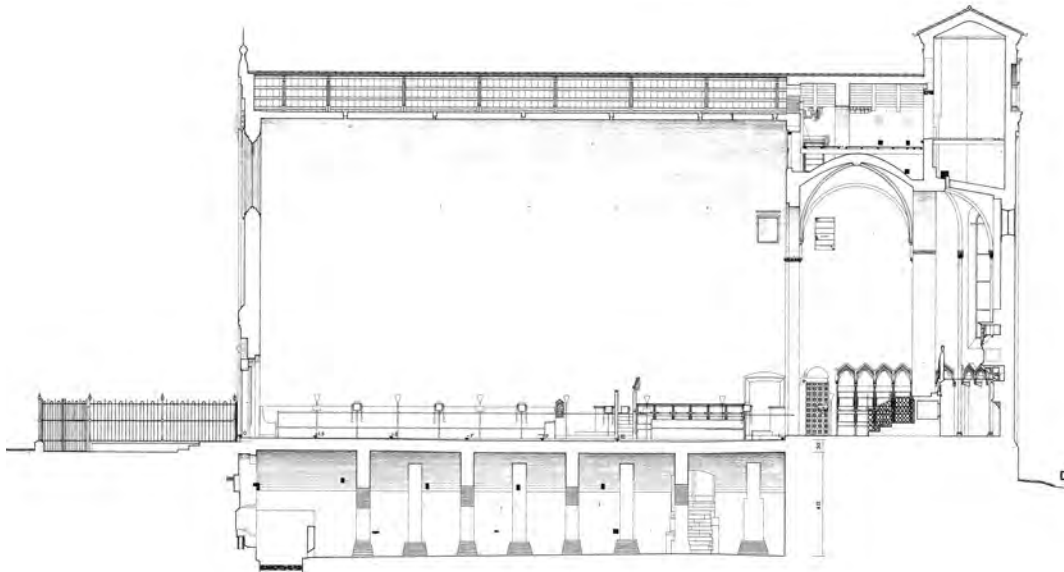
The Central restoration institute (now ISCR in Italy) between the 2001 and 2002 performed a restoration of the whole painting cycle.

The tests schedule is based on non destructive tests and it regards the control of the most relevant parameters of local and global structural behaviour. The tests are both periodical and continuous and they check direct , indirect measure and with them also some back analysis.

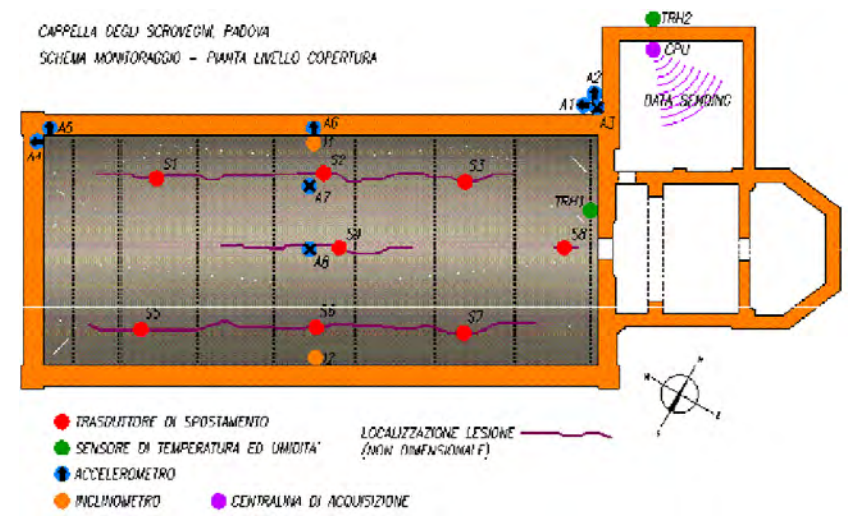








CAPPELLA DEGLI SCROVEGNI, PADOVA
SCHEMA MONITORAGGIO - PIANTA LIVELLO COPERTURA



SCHEMA MONITORAGGIO - PIANTA LIVELLO COPERTURA

